

800 SOUTH FIGUEROA STREET

CREATIVE OFFICE SUBLEASE



NEWMARK

RYAN HARDING

† 310-663-4639

ryan.harding@nrmk.com

CA RE Lic. #01737669

800 SOUTH FIGUEROA STREET

SUITE 750
4,342 SF

ASKING RATE
WITHHELD

TERM
THRU DECEMBER 2024

SUITE 1020
2,206 SF

AVAILABILITY
IMMEDIATELY

PARKING
1.0/1,000 SF



800 SOUTH FIGUEROA STREET

PLUG & PLAY OFFICE
SUBLEASE IN DTLA

TWO SEPARATE SUITES
AVAILABLE SEPARATELY

FURNITURE AVAILABLE

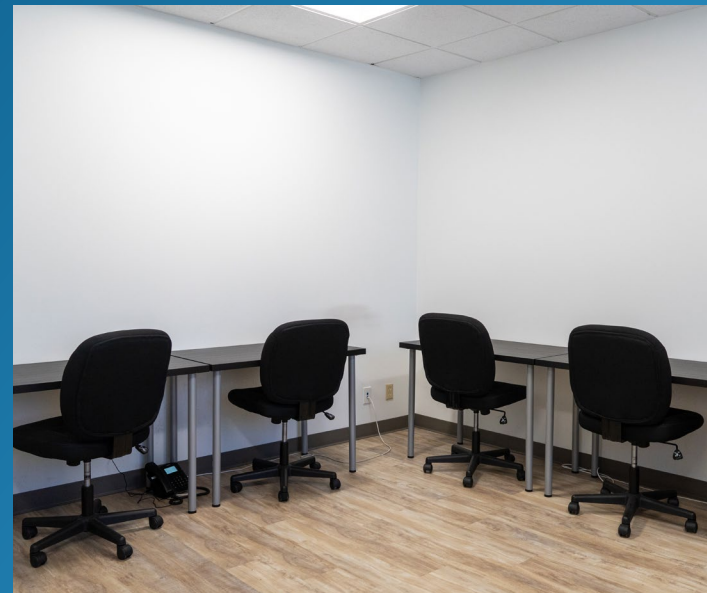
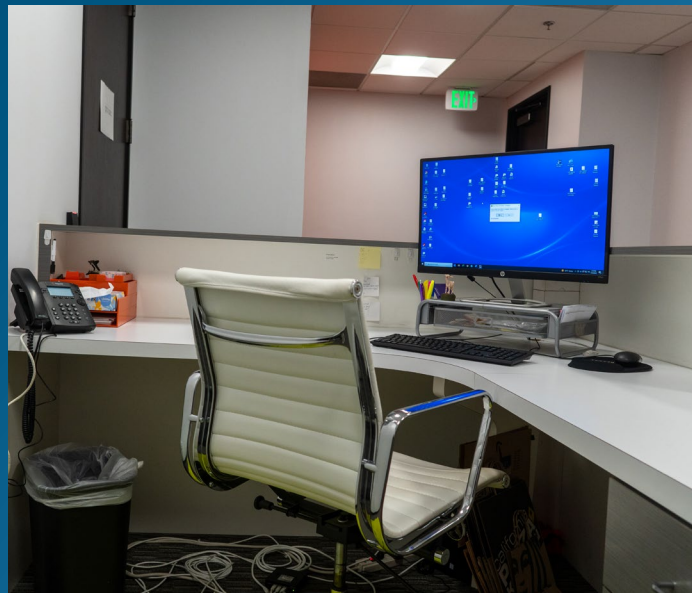
750: 5 PRIVATE OFFICES,
CONFERENCE ROOM, KITCHEN

1020: 8 PRIVATE OFFICES,
2 CONFERENCE ROOMS,
KITCHEN



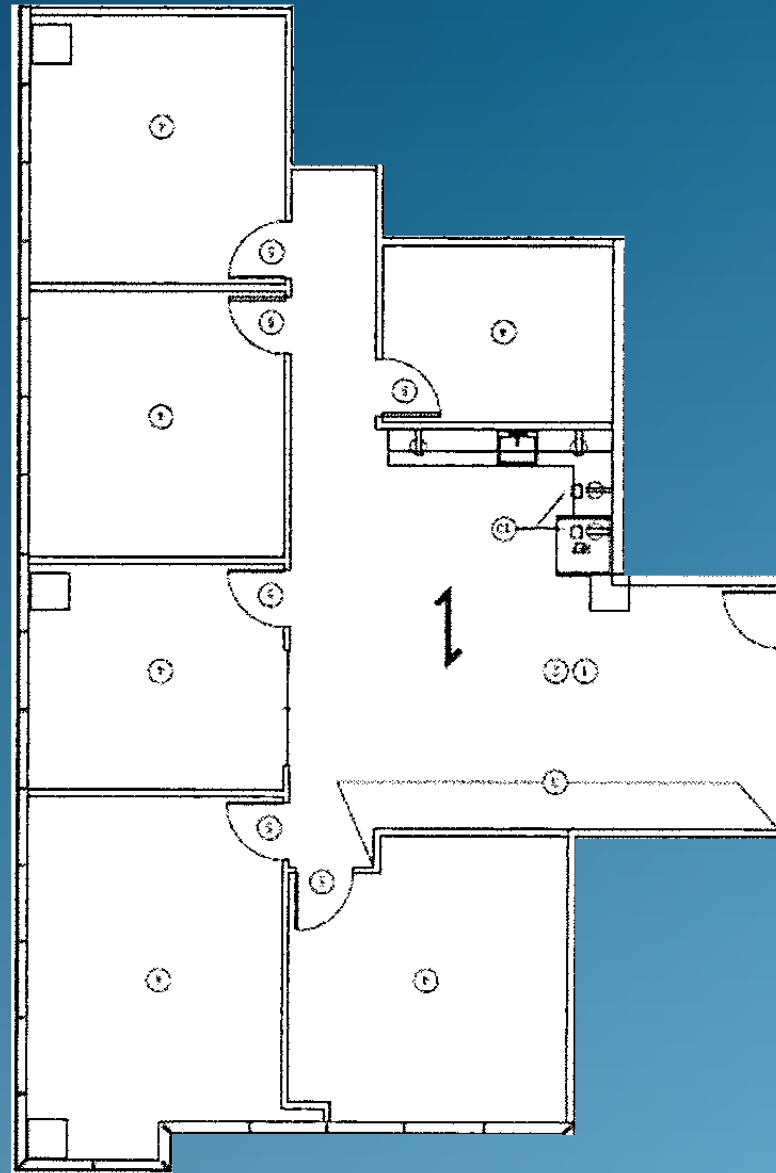
800 SOUTH FIGUEROA STREET

SPACE PHOTOS



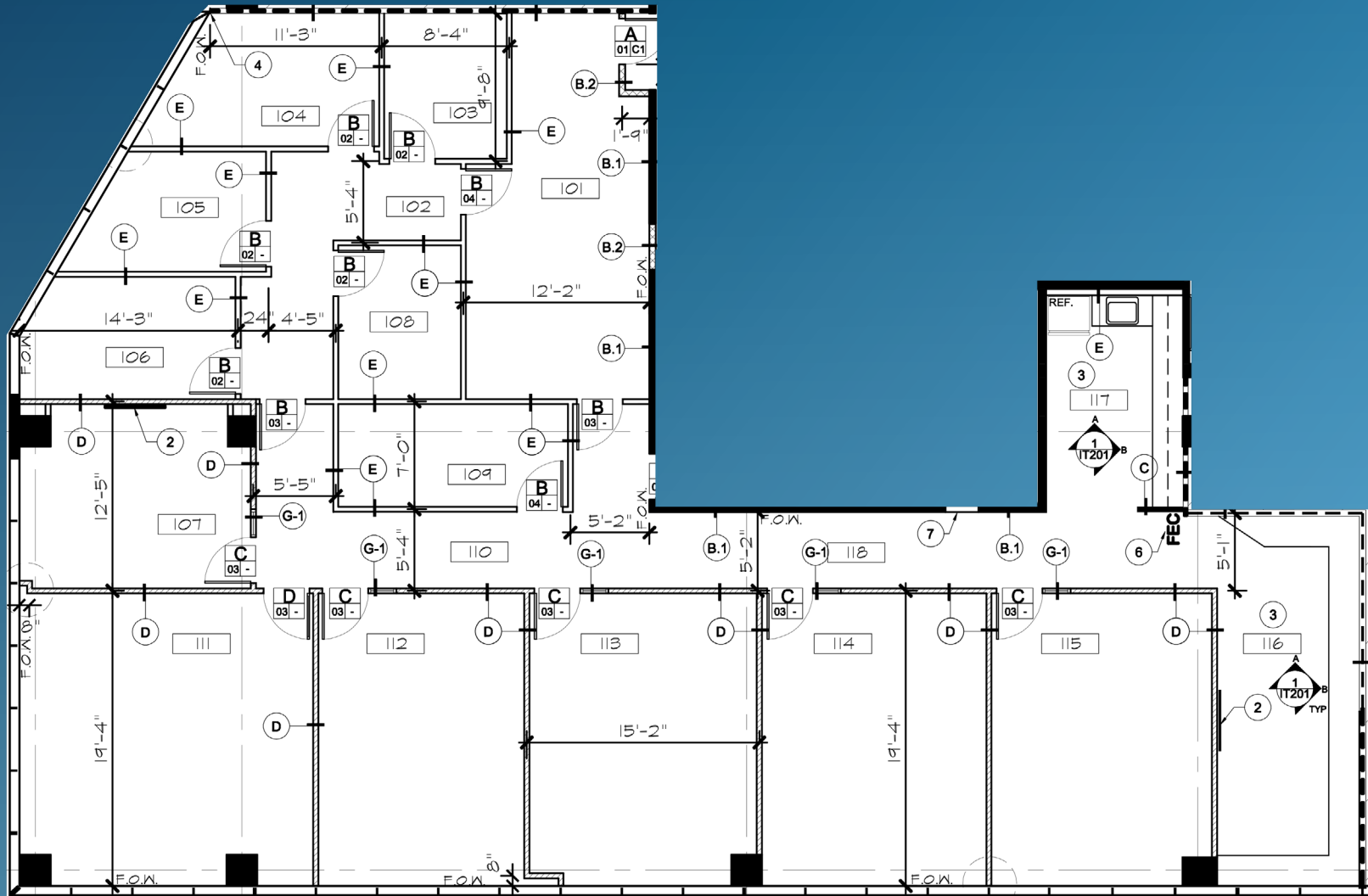
800 SOUTH FIGUEROA STREET

SUITE 750



800 SOUTH FIGUEROA STREET

SUITE 1020



800 SOUTH FIGUEROA STREET

CREATIVE OFFICE SUBLEASE

For more information, please contact:

RYAN HARDING

† 310-663-4639

ryan.harding@nmrk.com

CA RE Lic. #01737669

Corporate License #01355491

NEWMARK

The information contained herein has been obtained from sources deemed reliable but has not been verified and no guarantee, warranty or representation, either express or implied, is made with respect to such information. Terms of sale or lease and availability are subject to change or withdrawal without notice.