

6060 CENTER DR

LOS ANGELES, CA 90045

SUBLEASE

NEWLY BUILT OUT
FULL FLOOR
OFFICE SPACE

NEWMARK



PROPERTY DESCRIPTION

6060 CENTER DRIVE LOS ANGELES, CA 90045
ADDRESS

8,864 - 33,717 SQUARE FEET AVAILABLE
PREMISES

\$1.95 FSG ~~**\$2.75 FSG**~~
RATE

30 DAYS
OCCUPANCY

AVAILABLE
OCCUPANCY

4.0 PER 1,000 SF
PARKING

THROUGH NOVEMBER 2026
TERM

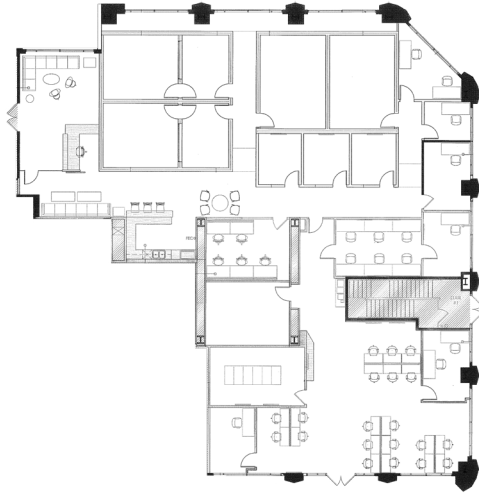


PRICE REDUCED!

FLOOR PLANS

SUITE 100

[VIRTUAL TOUR](#)



8,864 SF

TWO PROFESSIONAL RECORDING STUDIOS, TWO MIXING ROOMS

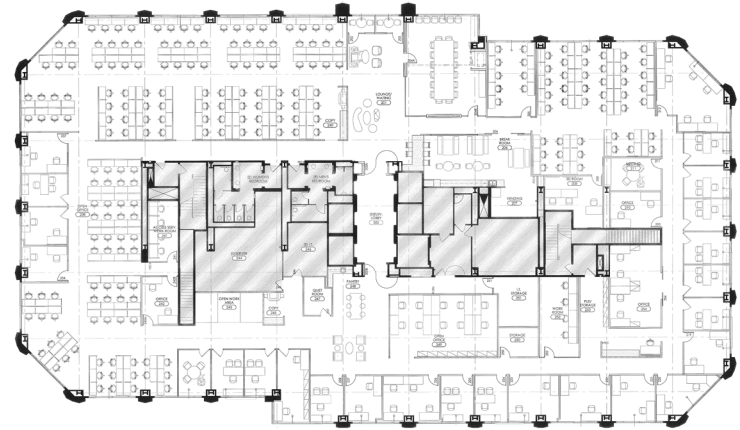
FIVE EDIT BAY ROOMS, FIVE PRIVATE OFFICES

LARGE OPEN OFFICE AREA WITH WORKSTATIONS

PRIVATE KITCHEN

SUITE 200

[VIRTUAL TOUR](#)



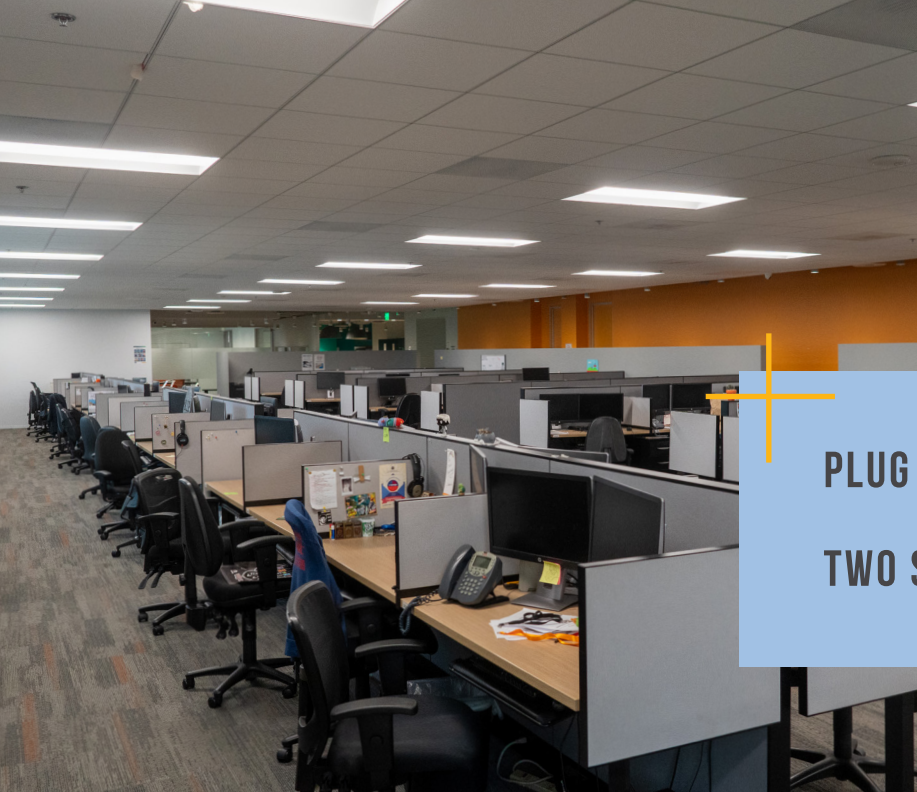
24,853 SF

NEWLY BUILT OUT FULL FLOOR OFFICE SPACE

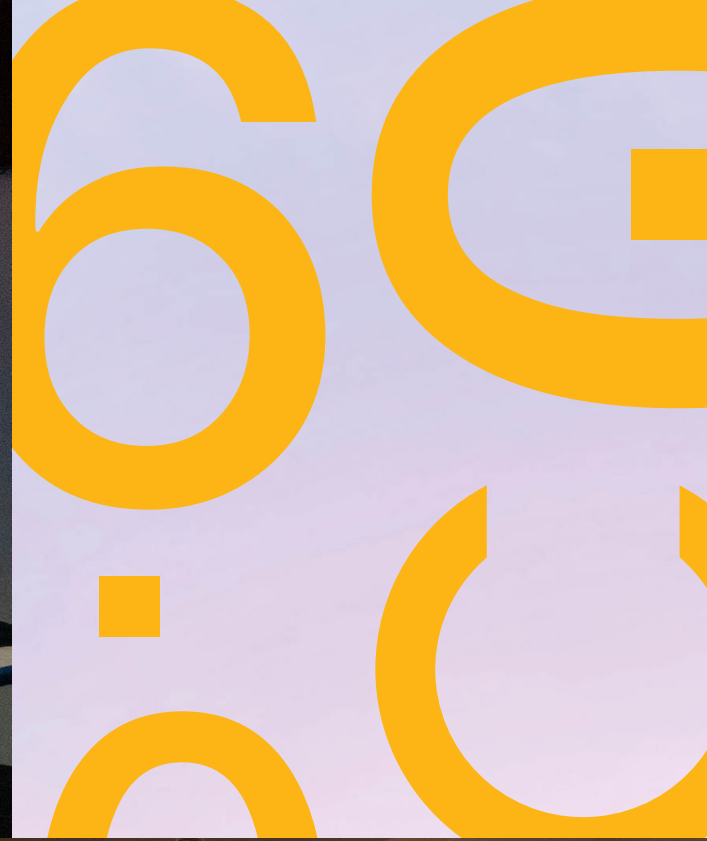
MULTIPLE PRIVATE OFFICES AND CONFERENCE ROOMS

AMPLE OPEN AREAS WITH WORKSTATIONS

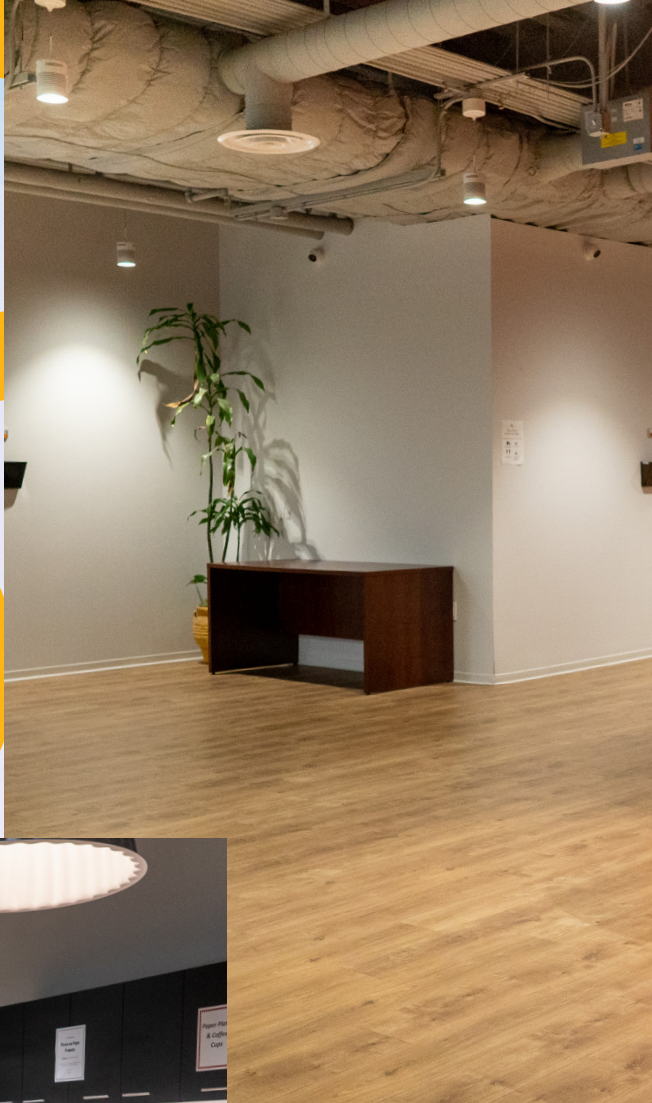
PRIVATE RESTROOMS



**PLUG & PLAY OFFICE SUBLEASE IN THE PLAYA DISTRICT CAMPUS
TWO SUITES AVAILABLE – CAN BE LEASED TOGETHER OR SEPARATELY**



MULTIPLE CONFERENCE ROOMS AND PRIVATE OFFICES
MULTIPLE PROFESSIONAL RECORDING & MIXING ROOMS



PRIVATE RESTROOMS IN SUITE 200

EXCELLENT COMMON AREA AMENITIES | DOG FRIENDLY CAMPUS

6060 CENTER DR

LOS ANGELES, CA 90045

SUBLEASE

FOR MORE INFORMATION, PLEASE CONTACT

RYAN HARDING
EXECUTIVE MANAGING DIRECTOR
T 213-596-2044
RYAN.HARDING@NMRK.COM
CA RE LICENSE #01737669

JENNIFER FRISK
SENIOR MANAGING DIRECTOR
T 213-596-2261
JENNIFER.FRISK@NMRK.COM
CA RE LICENSE #01880015

CHRISTOPHER TORIAN
TRANSACTION DIRECTOR
T 213-596-2258
CHRISTOPHER.TORIAN@NMRK.COM
CA RE LICENSE #02022140

NEWMARK

