

601

W. 5TH ST

CREATIVE OFFICE SUBLEASE
5TH FLOOR | 9,000 - 18,819 SF

JENNIFER FRISK

Senior Managing Director
t 213-596-2261
jennifer.frisk@nrmk.com
CA RE Lic. #01880015

DAVID KLUTH

Executive Managing Director
t 213-596-2048
david.kluth@nrmk.com
CA RE Lic. #01051194

NEWMARK





ADDRESS

601 W. 5th Street, 5th Floor
Los Angeles, CA 90071

SIZE

9,000 -
18,819 SF

ASKING RATE

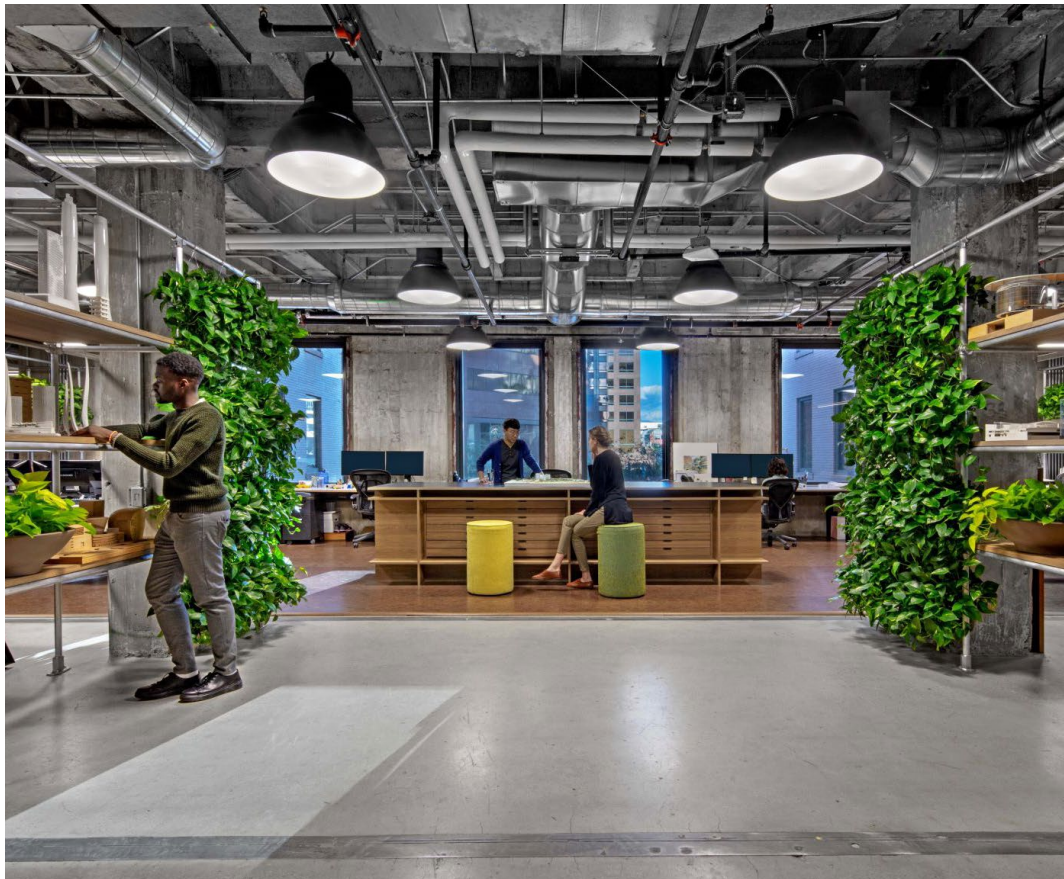
\$3.00 FSG

TERM

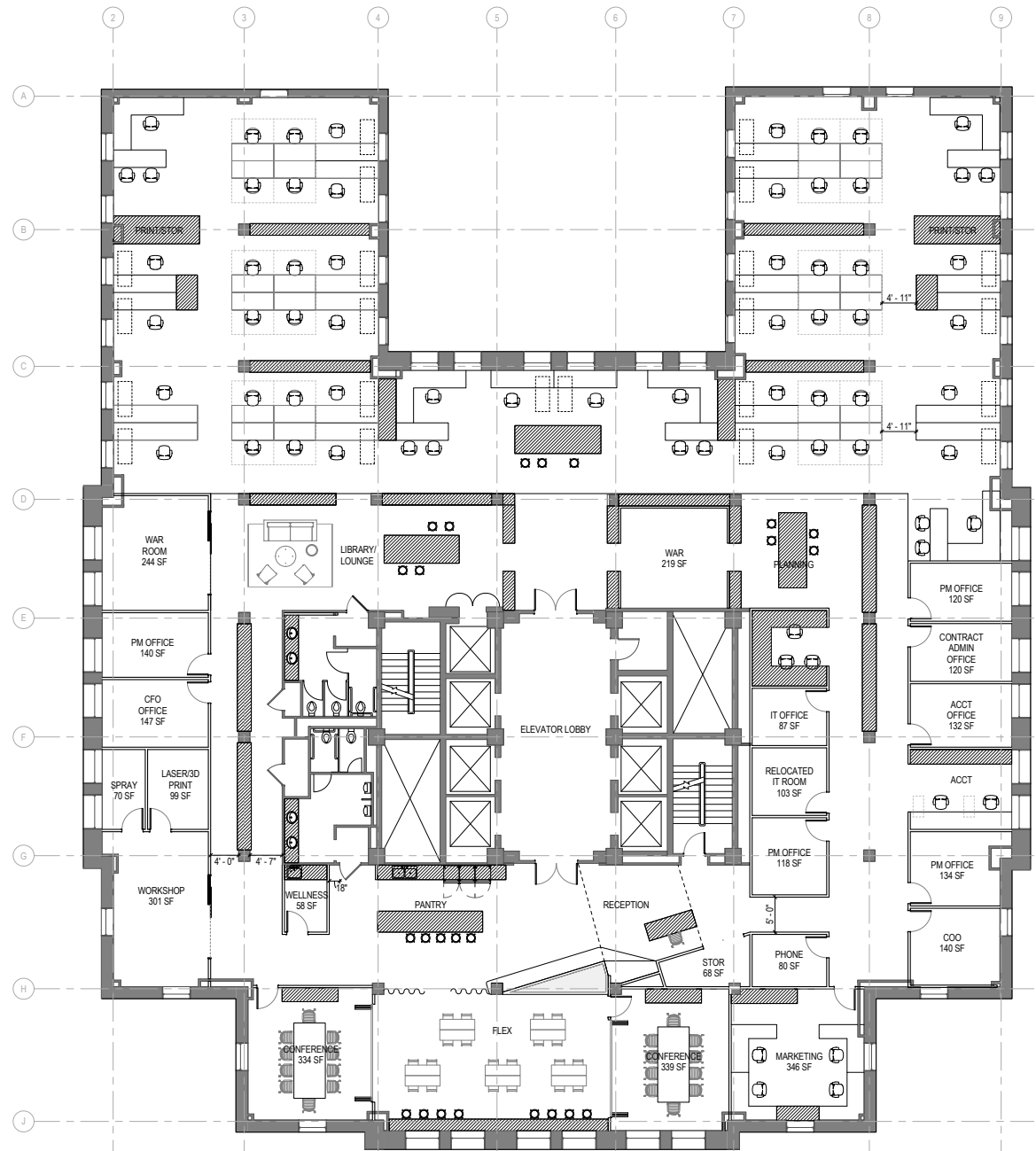
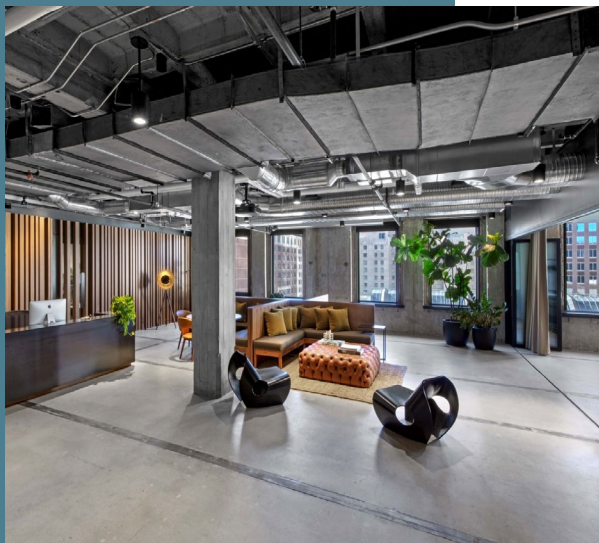
Through March 2029

HIGHLIGHTS

- Full floor creative office sublease in Downtown Los Angeles
- Mix of open area and private offices
- Ample amenities on-site and in walking distance
- Furniture available
- Rapt Studio designed space
- Can also be made available on a shared basis - inquire for details

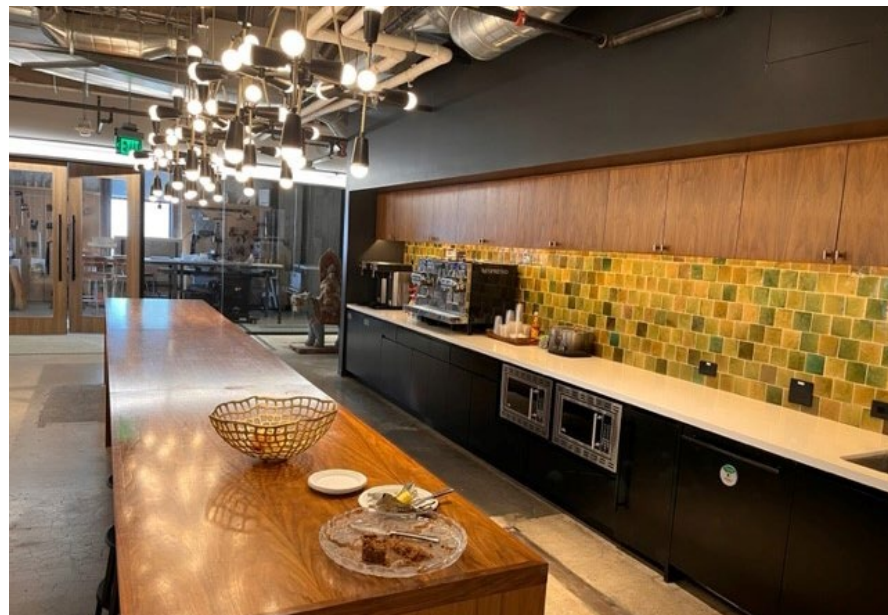


FLOOR PLAN



BUILDING HIGHLIGHTS

- Tenant lounge with conference room
- Energy star & LEED platinum certified
- Walk score of 98
- Close proximity to Metro
- Dog friendly
- On-site management
- 24/7 on-site security
- Secure parking garage
- Retail tenants include Sweetgreen and Aquarela Coffee



601

W. 5TH ST

JENNIFER FRISK

Senior Managing Director
t 213-596-2261
jennifer.frisk@nrmk.com
CA RE Lic. #01880015

DAVID KLUTH

Executive Managing Director
t 213-596-2048
david.kluth@nrmk.com
CA RE Lic. #01051194

NEWMARK

CORPORATE LICENSE #01355491

The information contained herein has been obtained from sources deemed reliable but has not been verified and no guarantee, warranty or representation, either express or implied, is made with respect to such information. Terms of sale or lease and availability are subject to change or withdrawal without notice.

