

1421-1423 EAST 15TH STREET

INDUSTRIAL SPACE FOR LEASE

NEWMARK

JENNIFER FRISK

† 562-447-5588

jennifer.frisk@nmrk.com

CA RE Lic. #01880015

1421-1423 EAST 15TH STREET

SIZE
6,500-13,000 SF

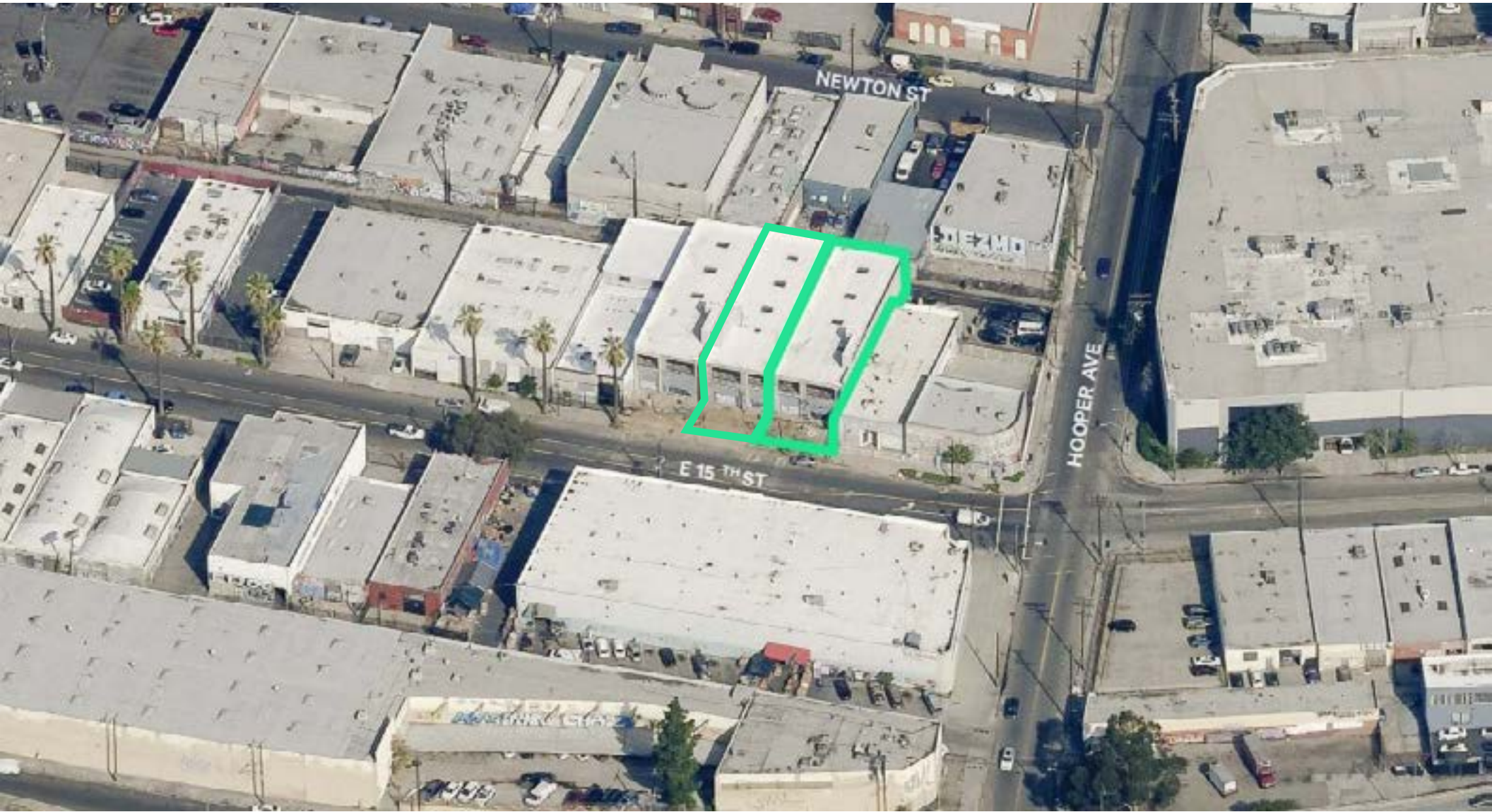
ASKING RATE
\$2.50 IG

TERM
THRU JULY 2025

ZONING
M2-2D

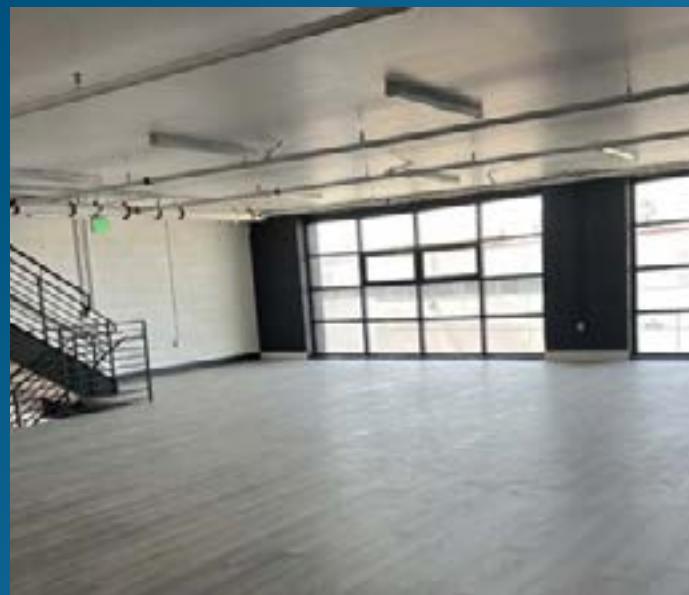
AVAILABILITY
IMMEDIATELY

PARKING
0.21/1,000 SF



1421-1423
E 15TH
STREET

SPACE PHOTOS



1421-1423 EAST 15TH STREET

INDUSTRIAL SPACE FOR LEASE

For more information, please contact:

JENNIFER FRISK

† 562-477-5588

jennifer.frisk@nmrk.com

CA RE Lic. #01880015

Corporate License #01355491

NEWMARK

The information contained herein has been obtained from sources deemed reliable but has not been verified and no guarantee, warranty or representation, either express or implied, is made with respect to such information. Terms of sale or lease and availability are subject to change or withdrawal without notice.